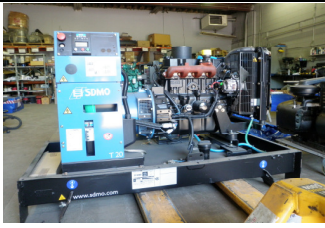


GAL Power Systems - Stock Diesel Generator Sets



GAL Stock Number - ST0012

Open SDMO T20U, Mitsubishi S4Q2 engine, Mecce Alte ECO28-1LN/4 alternator. Sub-base control panel.
\$10,000.00 CDN

SOLD!



GAL Stock Number - ST0032

DDACE package with Daewoo P222LE engine and Generac alternator. 500kW, 600V, 2002 model year with 257 hours. Open genset with no control panel.
\$40,000.00 CDN



GAL Stock Number - ST0042

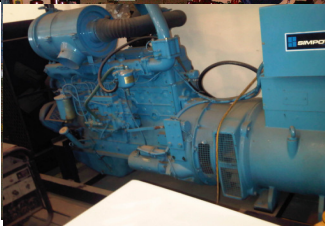
GM 4.3L powered, Marathon 3504-1506 alternator rated at 35kW, 120/208V. Equipped with controller, battery charger and block heater. Can be converted to operate on propane.
\$10,000.00 CDN



GAL Stock Number - ST0043

Mitsubishi 6D14 powered, Leroy Somers LSA441L6 alternator rated at 100kW, 600V. Mounted on trailer, battery charger, block heater and sub-base fuel tank.
\$15,000.00 CDN

SOLD!



GAL Stock Number - ST0055

Nissan PD6 powered, Markon alternator rated at 137kW, 600V. Schmidtec ECR400 controller, battery charger and block heater. 647 hours.
\$7,000.00 CDN